

Gastrointestinal Issues @ the ATN

January 2011



What **are** we up to?



- ▶ We looked at all of the kids enrolled in the ATN by last spring – 1185! (14 centers!)
- ▶ 45% had some GI complaint
 - #1 Constipation
 - #2 Abdominal Pain
 - #3 Diarrhea
 - #4 Other
 - #5 Nausea
 - #6 Bloating
- ▶ Presented at 3 large meetings!

American Academy of Pediatrics

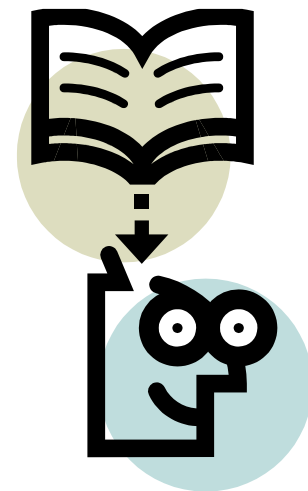
Recommendations for evaluation and treatment of common gastrointestinal problems in children with ASDs

Buie T, Fuchs GJ 3rd, Furuta GT, Kooros K, Levy J, Lewis JD, Wershil BK, Winter H. Pediatrics. 2010 Jan;125 Suppl 1:S19–29.

Evaluation, diagnosis, and treatment of gastrointestinal disorders in individuals with ASDs: a consensus report.

Buie T, Campbell DB, Fuchs GJ 3rd, Furuta GT, Levy J, Vandewater J, Whitaker AH, Atkins D, Bauman ML, Beaudet AL, Carr EG, Gershon MD, Hyman SL, Jirapinyo P, Jyonouchi H, Kooros K, Kushak R, Levitt P, Levy SE, Lewis JD, Murray KF, Natowicz MR, Sabra A, Wershil BK, Weston SC, Zeltzer L, Winter H. Pediatrics. 2010 Jan;125 Suppl 1:S1–18.

What else is the **ATN GI Group** doing?



- ▶ Putting together ‘algorithm’ or step-by-step guide to help **primary caregiver** work up and manage constipation with a focus on the child with ASD
- ▶ How can we sort out the “diet” issue?
- ▶ Sleep and Reflux – maybe **or** maybe not?

*INPUT FROM 14 Centers across
US and Canada*

...At the local site

- ▶ Here at Surrey Place, Sick Kids and Holland Bloorview, we are studying how we can help with toilet training



SickKids

Bloorview
RESEARCH INSTITUTE

- *Barreira, Moroz, Marcon, Green and Brian*



Toilet Training

- ▶ Eliminating on a toilet is not intuitive!
- ▶ Medical literature on toilet training: “woefully deficient” (Schum et al., 2002, p.48)

© Gregory Kogan. All rights reserved.

GagCartoons.com



“I’m working with my therapist on toilet-training trauma.”

Toileting issues in special populations

- ▶ **AHRQ (2006)**
 - Most of the current toileting methods are indicated for healthy, typically developing children
 - Limited research on toilet training for children with special needs and/or behavioural difficulties
- ▶ **Are children with autism more difficult to toilet train?**

Highlights of the project

- ▶ We are piloting a standard toileting questionnaire developed by our group
- ▶ Use of functional behaviour assessment (FBA) methodology to understand factors that contribute to maintaining the constipation or toileting problem, in order to target them specifically